



PRESENTING DEWBERRY'S NATIONAL PRACTICE

JUSTICE ARCHITECTURE

Our Commitment

Transformative justice design
that fosters restorative
outcomes.

Table of Contents

COURTHOUSE DESIGN

PUBLIC SAFETY DESIGN

SECURE HOUSING DESIGN

SECURITY & TECHNOLOGY

SUSTAINABILITY

Dewberry Profile

We are a service-oriented firm with a proven history of providing professional services to a wide variety of public and private-sector clients. Recognized for combining unsurpassed commitment to client service with deep subject matter expertise, we are dedicated to solving clients' most complex challenges and transforming their communities. Established in 1956, we are headquartered in Fairfax, Virginia, with more than 50 locations and 2,000 professionals nationwide.

A national firm that is regularly included in *Engineering News-Record's* lists of the top A/E firms in the country, we remain committed to providing the highest standards of professional services. Our designs have been recognized with more than 350 juried awards on national, regional, and local levels and we continue to work today to remain on the leading edge of architectural and interior design in all of our market sectors.

One of the first firms in the United States to specialize in justice architecture, we have worked in this vital practice area for nearly 40 years. Many of the professionals within our justice practice—including our in-house security and technology group—have devoted their entire careers to the design of justice facilities. This expertise allows us to respond to our clients' unique requirements with fresh and creative solutions that are operationally sound and utilize a range of alternative delivery methods including design-build and public-private partnerships.

As a national leader in justice facility design, we understand the importance of these facilities in the life of the public sector. The physical embodiment must inspire confidence; convey a sense of stability, reverence, and dignity' and project and provide openness and accessibility. We work with our clients to design safe and secure facilities to accommodate staff and the general public in a secure environment while accounting for the sensitive nature of our project types.

Our studio professionals have worked with all levels of the justice environment: municipal, state, and federal. Our long standing involvement in the justice community gives us a thorough understanding of the complex issues facing systems today. With every project, we strive to offer clients responsive solutions to the challenges of social justice and civic architecture. Offering a complete range of services to our clients from feasibility studies and system master plans to full designs for renovations, expansions, or new stand-alone facilities, we have developed a reputation for reliability and full-services design solutions.

Our Team



JAMES L. BEIGHT
AIA, LEED AP
Director of Justice
Architecture



LARRY HLAVACEK
AIA
Director of Public
Safety Architecture



BROOKE MARTIN
AIA, CCHP, LEED GREEN
ASSOCIATE
Project Manager



JONATHAN TALLMAN
AIA, GGP, GPCP, NCARB
Market Segment Leader

JAMES L. BEIGHT has over 40 years of experience as an award-winning designer of public projects with a specialized background in justice projects. In the last 10 years, he has served as Dewberry's Director of Justice Architecture, overseeing the group's efforts in Public Safety, Courthouse and Detention/Secure Housing design. He personally leads the design of many of the firm's high profile Justice projects inclusive of many of the firm's notable public safety projects. In his role as Director of the Justice program, Jim is responsible for the overall quality of the work of the practice and providing adequate resources to meet the demands of the practice.

LARRY HLAVACEK has proven leadership and expertise in the planning and design of public safety facilities spans over his 28-year career focused primarily on Justice and Civic Architecture. As a recognized national expert, his leadership delivers innovative, operationally efficient, flexible, and future-ready solutions ensuring the client's vision is realized. Larry's collaborative approach focuses on developing professional work environments that support mission critical operations, provide for the health and wellness of first responders, and support career development and staff retention. He frequently contributes to the profession through written publications, blogs, and speaking engagements on public safety design.

BROOKE MARTIN has 16 years of experience as a skilled architectural designer having worked on a wide variety of local and national projects. As a licensed architect, she has surveyed millions of SF in building space with an expertise to quickly review and assess existing facilities' needs. Brooke's true passion is Justice Architecture, specifically Secure Housing Reform, Restorative Justice, and Recovery: focused on challenging the status quo through supportive, trauma-informed, intentionally humane design that supports positive, treatment-focused outcomes within skill-building and learning environments and integrating functions that fit within a community's continuum-of-care.

JONATHAN TALLMAN has 16 years of experience in public safety architecture and is a subject matter expert in public safety planning and programming. He is knowledgeable in space needs analysis, conceptual design, construction documents, design development, and construction administration phase work for public safety projects, including police departments, fire stations, and other civic facilities.



CHRIS MONSMA
AICP
Programmer/Planner



BRADLEY HALL
AIA
Senior Secure
Housing Architect



BRUCE OMTVEDT
AIA, ASTM F-33
Senior Secure Housing
Designer/Programing &
Planning



CRAIG CLARY
DBIA
Technology/Security
Specialist

CHRIS MONSMA is an accomplished space planner on facility assessment, programming, space needs assessment, and master planning engagements. Chris has completed over 90 facility studies for all government facilities with an emphasis on public safety facilities. His studies help determine facility needs based on user's operational approaches.

BRADLEY HALL is highly experienced in all phases of the architectural design process from predesign, schematic design, design development, construction documents, and bidding through construction administration. He provides building code reviews and coordination of architectural drawings with all engineers with respect to building layout, constructability, mechanical systems, structural systems, and value engineering. Brad is involved in the complete process of quality assurance reviews, cost estimates, shop drawing reviews, and he responds to inquiries in relation to bidding and construction documents.

BRUCE OMTVEDT has more than 30 years of experience as a licensed architect, with a career focus in secure facility planning & design for law enforcement centers, detention facilities, E-911 dispatch communication centers, customs and border patrol facilities, government offices, courthouses, secure housing medical / mental health facilities, and prisons. He is an expert in detention space planning with security projects totaling more than \$2 billion in construction value and client-facing experience on more than 45 projects. Bruce is leading programming, planning, and design of secure facilities as Market Segment Leader for secure housing and detention.

CRAIG CLARY is a Technology/Security Designer with experience in new construction and renovation projects in the secure housing/justice facilities. Since joining Dewberry, Craig has devoted himself to the design and application of Security, Detention and Communications Technology with a focus on justice projects (jails, prisons, public safety, courts). He obtained his Designated Design-Build Professional certification from DBIA in 2014.





COURTHOUSE DESIGN

Chatham County Courthouse

SAVANNAH, GA

2023 • 165,000 SF • \$82M

For the expansion and renovation of the courthouse, Dewberry is leading a multi-disciplinary team of architects, engineers, courts planners, cost estimators. The design team participated in an effort to establish the most viable, cost effective solution to meet the needs of the Court within Chatham County's budget constraints. The program in the previous master plan was updated and alternative renovation and addition strategies were explored to address current and future space needs of the users.

The preferred option selected from the planning effort was to combine the construction of a new 165,000-SF trial courthouse site of the abandoned jail with the renovation of the existing 140,000-SF courthouse. The new five-story courthouse will house 13 courtrooms and associated judicial chambers for the State and Superior Courts of Georgia. The new courthouse will also house the State and Superior Court Clerk's Office along with Jury Management for both courts. The new courthouse will be connected to the existing courthouse via an underground tunnel which will provide a means to securely and discreetly bring in-custody defendants to the new trial courts.

A phased renovation of the existing six-story Chatham County Courthouse provided expansion of the Recorder's Court, Magistrate Court, Probate Court, and other county administrative offices. Tenants included the District Attorney, Sheriff's Office, Public Defender, Child Support Enforcement, Tax Commissioner, and the Board of Assessors. The renovation addressed the demands of life safety egress improving public and private circulation throughout the highly utilized public facility. All renovations have been phased to allow court operation to continue without interruption.





Stanley J. Roszkowski U.S. Courthouse

ROCKFORD, IL

2011 • 197,000 SF • \$88.5M

As Architect-of-Record, Dewberry planned and assisted in the design of this new federal courthouse for the General Services Administration (GSA). The courthouse was designed in compliance with GSA's Design Excellence Criteria and the GSA/ISC Design Criteria for Courthouses and Federal Facilities. The building's design accommodates the 10-year space requirements of the District Court and court-related agencies from date of occupancy and allows for physical expansion to accommodate the Court's identified 30-year requirements and goals directly to the south of the initial structure.

The organization of the functional spaces and shape of the selected site resulted in a long, narrow building design that strongly defines what will be the western edge of a newly created civic park. The most heavily trafficked departments are located on the first two floors directly adjacent to the main entrance atrium.

LEED Gold Certified by the U.S. Green Building Council, one of the main sustainable features of the design is the extensive use of day-lighting and borrowed light throughout the interior spaces, including the courtrooms.





Chester County Courthouse

WEST CHESTER, PA
2008 • 397,000 SF • \$70M

As the Associate Justice Architect on the new courthouse, Dewberry led courts planning, interior architecture, and interior design services. Designed by Thomas Ulstick Walter in 1846, the team studied various renovation and expansion options to the existing historic Greek Revival courthouse. After careful consideration, the County decided to build a new courthouse two blocks away instead of expanding the existing one.

The design of the new courthouse is sympathetic to the local character of the Borough architecture, as well as the original architecture of the historic Courthouse. The building mass compliments the scale and character of the Borough streetscape. The interiors provide a secure environment for the efficient and effective implementation of Justice, maintaining critical separations between those detained, the judiciary and their staff, and the general public. The building consolidates all the County's Court functions into one facility, which greatly enhanced the operational efficiency of the court system.





Metropolitan Davidson Courthouse

NASHVILLE, TN

2007 • 232,615 SF • \$35.7M

Nashville's Courthouse is a majestic, 11-story historic structure built in 1937. The Classical Revival courthouse anchors the City of Nashville's downtown as the center of city's civic core. It has a unique blend of traditional classical architecture with 1920's art deco murals and detailing. While quite eclectic in many regards, the building holds together magnificently and is a landmark courthouse facility deserving of much veneration from the community it serves.

The building suffered from a lack of separation of internal circulation of the public, judiciary/staff and in-custody defendants, significant code issues, and its systems were woefully inadequate and outdated. Instead of abandoning this important landmark for a new facility, the County opted to pursue the challenge of restoring and renovating this building in order to return its historic features to their original state while modernizing the building's operational functionality and building systems.

The design team successfully met the challenge to design a solution that meets the County and the Courts' programmatic and security needs, as well as modern life-safety code requirements, while maintaining and harmonizing with the building's impressive historic fabric.





DAVIDSON COUNTY PUBLIC BUILDING AND COURT HOUSE

Sherburne County Government Center

ELK RIVER, MN

2018 • 130,000 SF (GOVERNMENT CENTER) & 100,000 SF (COURTHOUSE ADDITION) • \$51M

Dewberry, in conjunction with local architect, BWBR, provided programming and design services for the renovation and courts expansion of the Sherburne County Government Center. The project sought to design and construct one main entry point allowing clear access to the existing building and secured access to the courts expansion building. Direct access from the jail to the new courts expansion building needed to be addressed. This was achieved by creating an in custody bridge connection from the jail directly to the courts expansion building through the second level of the building. The new courts expansion has been designed to accommodate five new courtrooms with Courts Administration, Jury Assembly, Community Corrections, County Attorney and Central Holding.





Loudoun County Courts Complex

LEESBURG, VA
2022 • 92,000 SF • \$56M

The renovation and expansion of the Loudoun County Courts Complex in downtown Leesburg, Virginia, offered Dewberry some unique challenges. Encompassing a campus environment with multiple land parcels and existing structures, a highly functioning design was required to respect and enhance the history and context in which the buildings are sited, offer state-of-the-art technology, innovative solutions for sustainability, flexible design providing for future growth, and context within its historic location.

The resulting courthouse design, inclusive of segregated circulation, internal and external security provisions, courtroom design and technology, was integrated into a functional design solution that is appropriately massed and articulated to support the important civic role the courthouse plays in our urban landscape.

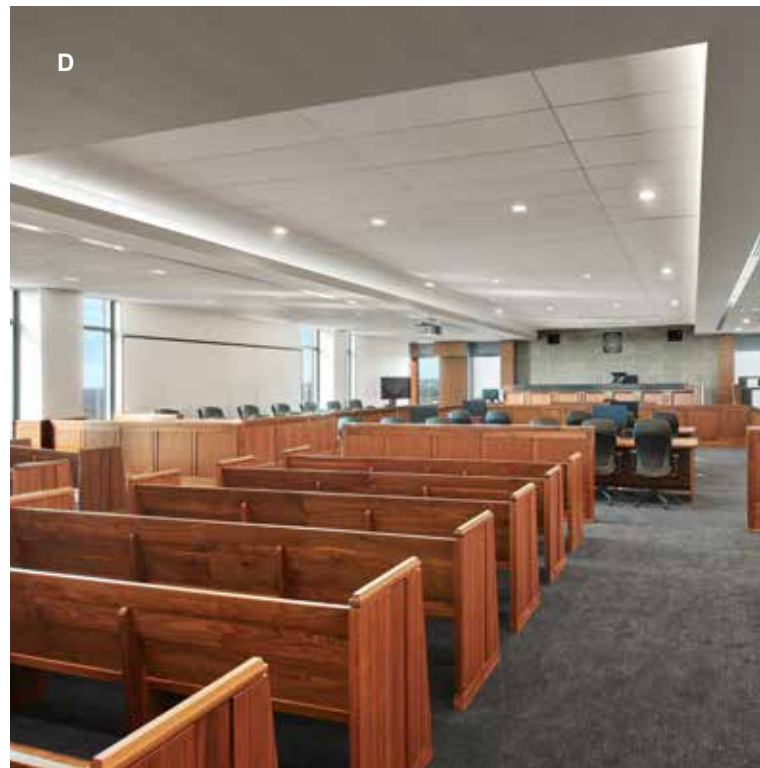
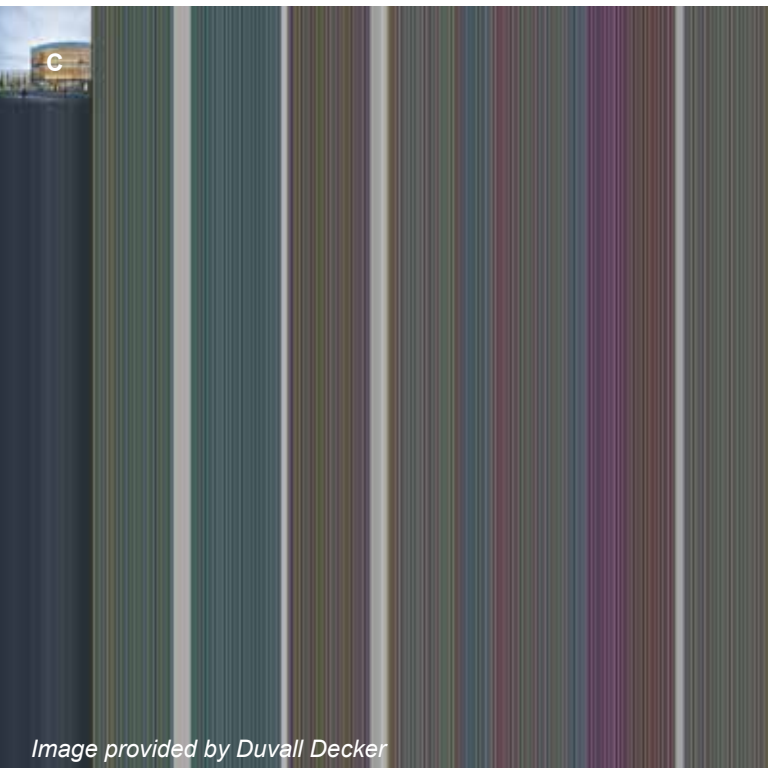
One of Dewberry's strengths, gained from a history of working with government clients and public users, is our ability to understand the importance of every project to the end users and the local community. We channel often disparate needs, wants, and goals into a single shared vision. Our experience in civic architecture enhances our general expertise with a specialized familiarity with the unique demands of the public and associated stakeholders.





Additional Courthouse Project List

- Howard T. Markey National Courts Building Renovation | Washington, D.C. — **A**
- Nazario Courthouse and the Degetau Federal Office Building | Hato Rey, Puerto Rico — **B**
- Greenville, MS Courthouse | Greenville, MS — **C**
- Bucks County Courthouse | Doylestown, Pennsylvania — **D**
- Arlington County Courthouse Study | Arlington, Virginia
- Portage County Courthouse | Stevens Point, Wisconsin
- Morris County Courts and County Administration Space needs and Facilities Assessment | Morristown, New Jersey
- Judicial Council of California Statewide Master Plan | California
- Volusia County Judicial Space Analysis | Deland, Florida
- Pinellas County Courts Consolidation | Clearwater, Florida
- U.S. Courthouse | Greenville, Mississippi
- U.S. Courthouse of Southern Maryland Renovation | Greenbelt, Maryland
- U.S. Courthouse and Federal Building | Urbana, Illinois
- Superior Court of California, San Diego County Courthouse (Detention Design) | San Diego, California
- Livingston County Law and Justice Center | Pontiac, Illinois
- Boone County Courts Expansion Study | Belvidere, Illinois
- U.S. Courthouse and Federal Building Renovation | Peoria, Illinois
- Peoria County Courthouse Addition and Remodeling | Pekin, Illinois
- State of Maryland Administrative Office of the Courts Long Range Space Planning Services | Annapolis, Maryland
- Montgomery County, Revised Space Program and Planning Study for the Judicial Annex Circuit Court Expansion | Rockville, Maryland
- City of Mansfield New Justice Center | Mansfield, Ohio
- City of Portsmouth Justice Facility Study and Implementation | Portsmouth, Virginia
- Roanoke Courts Planning | Roanoke, Virginia
- District of Columbia Office of Administrative Hearings | Washington, D.C.
- Manitoba Courts Complex Planning | Manitoba, Canada
- Tomochichi Federal Building and Courthouse Master Plan | Savannah, Georgia
- Bernalillo County Courthouse Master Plan | NM





TOLLESON
POLICE AND COURT

8350



PUBLIC SAFETY DESIGN

Glen Ellyn Police Station

GLEN ELLYN, IL
2017 • 30,000 SF • \$13.5M

In 2015, the Village of Glen Ellyn decided to move its outgrown police department out of the historic Civic Center downtown and into a brand new facility, triple the size, located at the east edge of Panfish Park. The site conditions presented many challenges which had to be overcome. Over half the site is in the 100-yr flood plain with bad soil which caused most of the functions to be organized along the west side of the property. The public parking and plaza areas act as a gateway to the improved adjacent park.

First floor program spaces include a community room, records, patrol, booking & holding, evidence processing, locker rooms, break area, and a fitness room. Second floor program spaces will include admin and investigations and building support spaces. Future expansion of evidence storage, patrol, and investigations has been master planned along the east side of the building. The building's massing and material palette have been inspired by the natural setting of the park and include stone, glass, and fiber cement panels that look like wood. The public amenities and entrance have all been grouped along the south end of the building with an inviting, transparent 2-story lobby.





Town of Vienna Police Station

VIENNA, VA

2022 • 28,000 SF • \$15M

Dewberry designed a new 28,000 SF Police Headquarters facility for the Town of Vienna, VA. The existing police building was demolished and the existing site was redeveloped to include the new police headquarters building.

The design team conducted a conceptual design workshop with the police department in order to determine the appropriate adjacency and stacking relationships between the functional departments. This exercise resulted in three options which were developed for a preliminary review by the police department which culminated in a selected option.

As part of the police facility design, it was extremely important to understand neighborhood and site context around the building. It was also important to study existing architecture in the Town, as well as identifying any design precedents that might apply to the police facility design. With this in mind, Dewberry conducted a series of work sessions with a goal of working collaboratively with municipal and community stakeholders to develop a design direction for the new Police Station that would acknowledge context while enhancing civic pride.





Killeen Police Headquarters

KILLEEN, TX

2010 • 81,700 SF • \$22.8M

This LEED Gold Police Headquarters represents a sustainable, inviting, contextual yet modern civic building design that has instilled a new sense of pride for the city and their police force. The use of leuders limestone predominately in this project helps give the building a strong sense of place for this community. This new facility brings together seven fragmented and remote police operations under one roof. As a regional resource, it provides community and training rooms that reinforce the PD's mission of community outreach.

The south Killeen site is part of the regional "Hill Country" topography. The design takes advantage of the sloping terrain by nestling the building into the hillside. This sensitive siting achieves a critical security separation between public and staff entry points by allowing them to be on different levels, yet on the same axis. The angular, stone clad volume along the street serves as a reminder of the limestone overhangs found throughout the region. The design evokes the vernacular of the area with native limestone cladding, sandblasted concrete plinths, and metal panels. The landscaping focuses on regional/native grasses and drought-resistant plantings.

The project team focused on reducing energy consumption to achieve a high performance building design. Interior roller shades were installed along all west and south window openings to control heat gain and glare while still allowing filtered daylight into spaces. 365 geothermal wells, each 250 feet deep serve the cooling and heating needs of the facility.





Countryside Net Zero Energy Designed City Hall and Police Headquarters

COUNTRYSIDE, IL
2019 • 34,900 SF • \$21.8M

This new local government building in Countryside, Illinois, is leading the way as an example of sustainable design and civic architecture. Instead of merely expanding on its previously undersized facility, our team designed a new city hall and police station with LEED Silver® and Net Zero ambitions—the latter of which had never been achieved by a municipal building in the state of Illinois.

Net Zero energy design was achieved via integrated design and close collaboration amongst our architects, engineers, and consultants. A precise building envelope design along with exceptionally efficient MEP systems form the basis for the low energy strategy in Climate Zone 5. Photovoltaic arrays at the building's roof and over the police vehicle car port areas will provide onsite renewable energy to balance power usage.

In addition to supporting the sustainable features of the project, we helped realize project goals of increasing staff efficiency while maintaining a secure perimeter between public and private city functions and providing a storm shelter and variety of meeting rooms for community group events.

The new L-shaped building is divided into police department functions on the north and city hall functions on the south with a shared public amenities core. A centrally located two-story lobby welcomes the public and serves as an access point for both the police and city hall functions. The first floor police wing consists of a records office, patrol suite, police staff break area, evidence processing, booking and holding, and locker rooms. The first floor city hall wing consists of an open community development department suite, executive conference room, and a 1 ½ story council chambers with dais seating for 12 members. The Grand Hall corridor along the east provides the public access to the Council Chambers through an array of glass and seating bump-outs. The corridor features an interspersed gallery exhibiting Historic Route 66 and the history of Countryside. The second floor consists of Police Administration and Investigations on the north while an administration suite and break room with green roof access will be provided for City Hall on the south.





Dallas Police Headquarters

DALLAS, TX

2004 • 352,000 SF • \$52M

As the City of Dallas's first LEED Silver project, the Jack Evans Police Headquarters is located in an area of the City undergoing revitalization. The six-story structure houses the central administration offices, investigations division, records, personnel, identification laboratory, automated fingerprint/identification systems, and a Police Museum. Constructed on a 3-acre brownfield site, a central courtyard introduces natural light into the core of the building and a bridge connects to an existing 1,200- car parking structure.

Dewberry provided a perimeter distance to the road for blast mitigation and incorporated blast film to the lower level windows to limit flying glass debris. Bollards were also strategically placed to prevent vehicles from being driven into the building along with vehicle barricades that were integrated into the access road behind the facility.





Hillsborough County Emergency Operations Center

TAMPA, FL

2016 • 91,250 SF • \$24M

This new Emergency Operations Facility is located on a 19-acre site. The program includes five major components; the Incident Command Center, Dispatch Command, Information Technology Services, Fleet Services Repair, and Fire-Rescue Training. Other county functions included in the project are a 311 Call Center, Radio Facility and Warehouse. The Fire Training Facility is specially designed to meet the Florida State Fire College Certification and is a 24/7 facility. Additionally, it is designed to accommodate 276 personnel during incident activation. The building and structure are hardened and designed to be resilient against the coastline hurricanes; withstanding 200 mph storm winds.

The project was developed as a design-build project based on a limited set of criteria documents issued by the county, increasingly challenged by the pressure to deliver the project on a very restricted budget, and a compressed 22-month design and construction schedule. This project required creative and new ideas in order to simplify the criteria package and yet increase the level of design, in both the enhancement of users experience and the civic presentation of the building to the public.



1. Emergency Operations
2. Fire - Rescue Fleet Repair
3. Fire - Rescue Training
4. Future Environmental Lab
5. Existing Water Treatment Facility



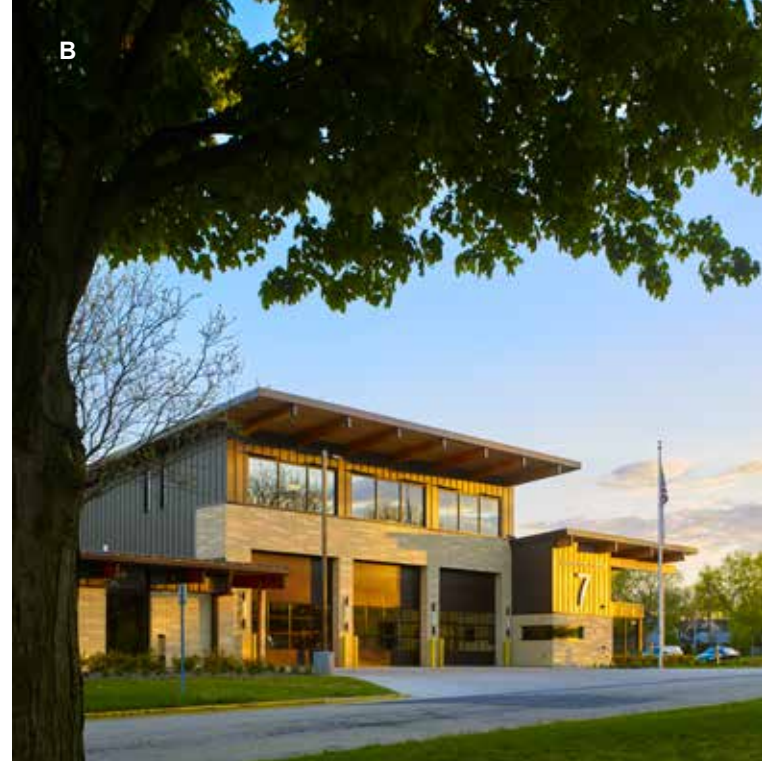
Additional Public Safety Project List

- Bartlesville Police and Fire Complex | Bartlesville, Oklahoma — **A**
- Public Safety Building | Gilbert, Arizona — **B**
- Alexandria Police Headquarters | Alexandria, Virginia — **C**
- Police Substation 2 | Denver, Colorado — **D**
- Police Substations | Denver, Colorado
- New Police Station | Harvard, Illinois
- Municipal Complex | Springdale, AR
- Police Training Facility Space Needs Study | Temple, Texas
- Police Department Planning Study | Benicia, California
- City Hall and Police Department | Countryside, Illinois
- Public Safety Facility | Sand Spring, Oklahoma
- Public Safety Complex | Lawton, Oklahoma
- Emergency Operations Center | Hillsborough County, Florida
- West Ox Police Heliport | Fairfax County, Virginia
- Police Station | Vienna, Virginia
- Decatur Fire Department Building Program | Decatur, Illinois
- Master Services Agreement | Orange County Sheriff-Coroner Department, California
- City Hall, Police, and Courts Study | Wichita Falls, Texas
- Police, Jail, and Municipal Court | Euless, Texas
- New Police Facility | Saginaw, Texas
- City Hall Renovation/Addition | Saginaw, Texas
- Coppell Justice Center | Coppell, Texas
- Tri-City Police Training Facility | Plano, Texas
- Department of Public Safety, West Facility | Southlake, Texas
- Police Station | Deer Park, Texas
- Department of Public Safety Renovation | Highland Park, Texas
- Police Department | Grapevine, Texas
- Police and Courts Headquarters | Tolleson, Arizona
- Village Hall and Police Department | Romeoville, Illinois
- New Police Facility | Moline, Illinois
- Police Headquarters | Peoria, Illinois
- Loudoun County Public Safety Building | Leesburg, Virginia
- Training Center Expansion | Leesburg, Virginia
- Loudoun County Sheriff Administration | Ashburn, Virginia
- Police Station | Niles, Illinois
- City/County Public Safety Building Expansion | Danville, Illinois

A



B



C



D





STANISLAUS COUNTY SHERIFF'S DETENTION

00



SECURE HOUSING

Mule Creek Infill Complex

IONE, CA

2013 • 543,884 SF • \$370M

The Mule Creek Infill Complex (MCIC) project for the California Department of Corrections and Rehabilitation is a 1,584 bed “Infill” complex adjacent to the existing Mule Creek State Prison (MCSP) in Ione, CA.

The MCIC is a standalone dual complex facility consisting of:

- Six Level II Dormitory style housing units (three per facility) to accommodate 264 inmates each, for a combined total of 1584 inmates.
- Complex Control Services Building
- Facility Support Services Buildings / Health Care Services
- Facility Food Services Satellite
- Work Change Buildings
- Work Zone Building
- Program Support Services Building
- Family Visiting Building
- Visitor/Staff Entrance Building
- Receive and Release Building
- Guard Towers
- Vehicle Sallyport
- Electrified fence secure perimeter

As part of a design-build team, Dewberry served as Design Architect for the six dormitory housing units and the Work Zone/Work Change buildings. Dewberry also designed detention and security electronics for the entire building complex.





Calaveras County Adult Detention Facility and Sheriff's Administration Facility

SAN ANDREAS, CA
2014 • 118,000 SF • \$44M

Dewberry was the lead designer and architect of record for a new Adult Detention Facility (ADF) and Sheriff's Administration building for the County. This facility was one of the first projects designed and constructed utilizing AB900 funding by the State of California. Dewberry assisted the County throughout the lengthy and rigorous AB900 process which led to the acquisition of funds for the new facility.

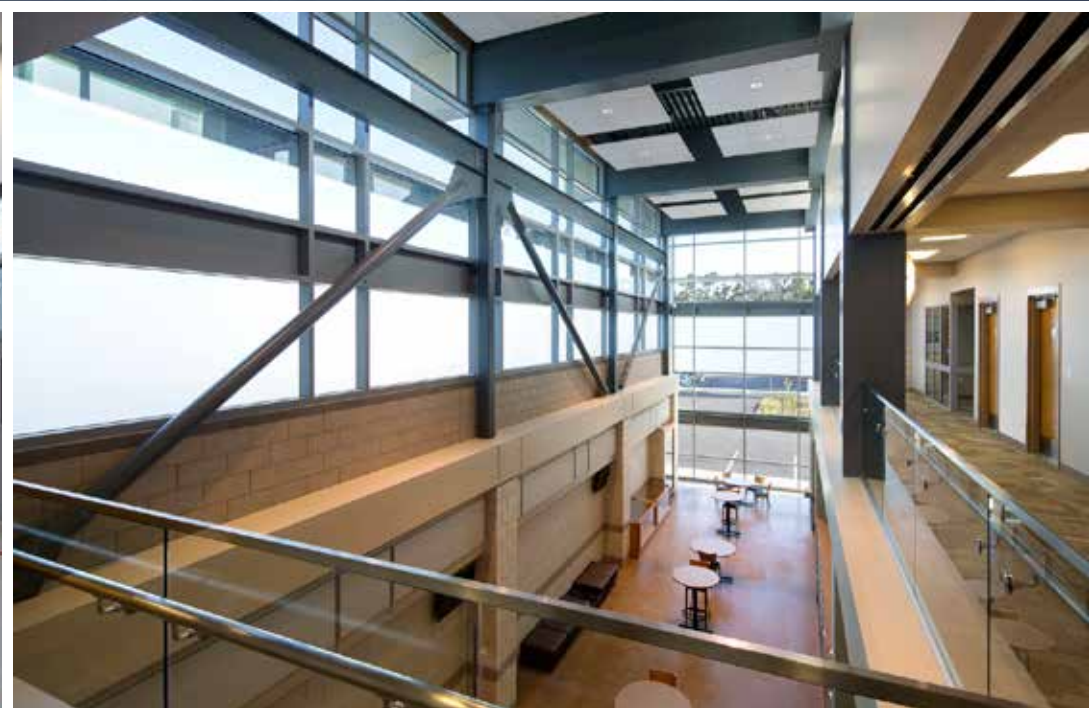
The ADF is designed to house 160 inmates within six separate pods -- two male general population pods, two female general population pods, one male administrative segregation pod and one female administration segregation pod. All pods include double-bunked cells, inmate program spaces and outdoor recreation areas. Other key elements include a full-service kitchen, separate medical care area, future dental space, laundry room, drive-thru sallyport and a connecting tunnel to the adjacent County Courthouse to transport inmates to and from court. The detention facility includes a state-of-the-art security and technology package to provide safety for the staff and inmates.

The sheriff's administration building includes an E911 emergency dispatch, emergency operations center, evidence processing & storage area, CSI automobile garage, interview rooms, locker rooms, work-out area, public assembly space and staff communal area. A dormitory was designed as part of the facility but was not built due to funding limitations.

Sustainable features include minimizing woodland removal, photovoltaic panels, solar collectors for domestic hot water, energy efficient building enclosure, high albedo/"cool" roofing and energy efficient HVAC systems.

Dewberry provided architectural planning and design, interior design, security and technology systems design, and construction administration. Initial services also included architectural program validation, schedule and budget validation and pre-design engineering services.





David L. Moss Justice Center Jail and Mental Health Expansion

TULSA, OK

2018 • 83,663 SF • \$28M

To address overcrowding and better serve inmates with mental health needs, in 2014 voters approved funding for the expansion to the Tulsa County Jail, which originally opened in 1999. The expansion's primary focus is to provide specialized housing and treatment spaces that are essential to assisting those in need of mental health services.

The new mental health unit consists of two pods that have a capacity of up to 98 beds, four levels of security, and an office and counseling spaces, as well as facilities for video court processing. To create a more therapeutic, calming environment, we introduced more daylight into the space. Adjacent to the unit is a mental health treatment area, which accommodates both inmates in the mental health pods and those undergoing treatment for mental issues throughout the entire facility. The general population unit includes two new pods that can accommodate up to 160 inmates in a dorm style setting, and also enables the county to provide flexibility for future operational programming that is being considered.

The addition matches the exterior of the original facility and was designed to be operationally efficient, allowing for clear lines of sight and ample sound absorption.





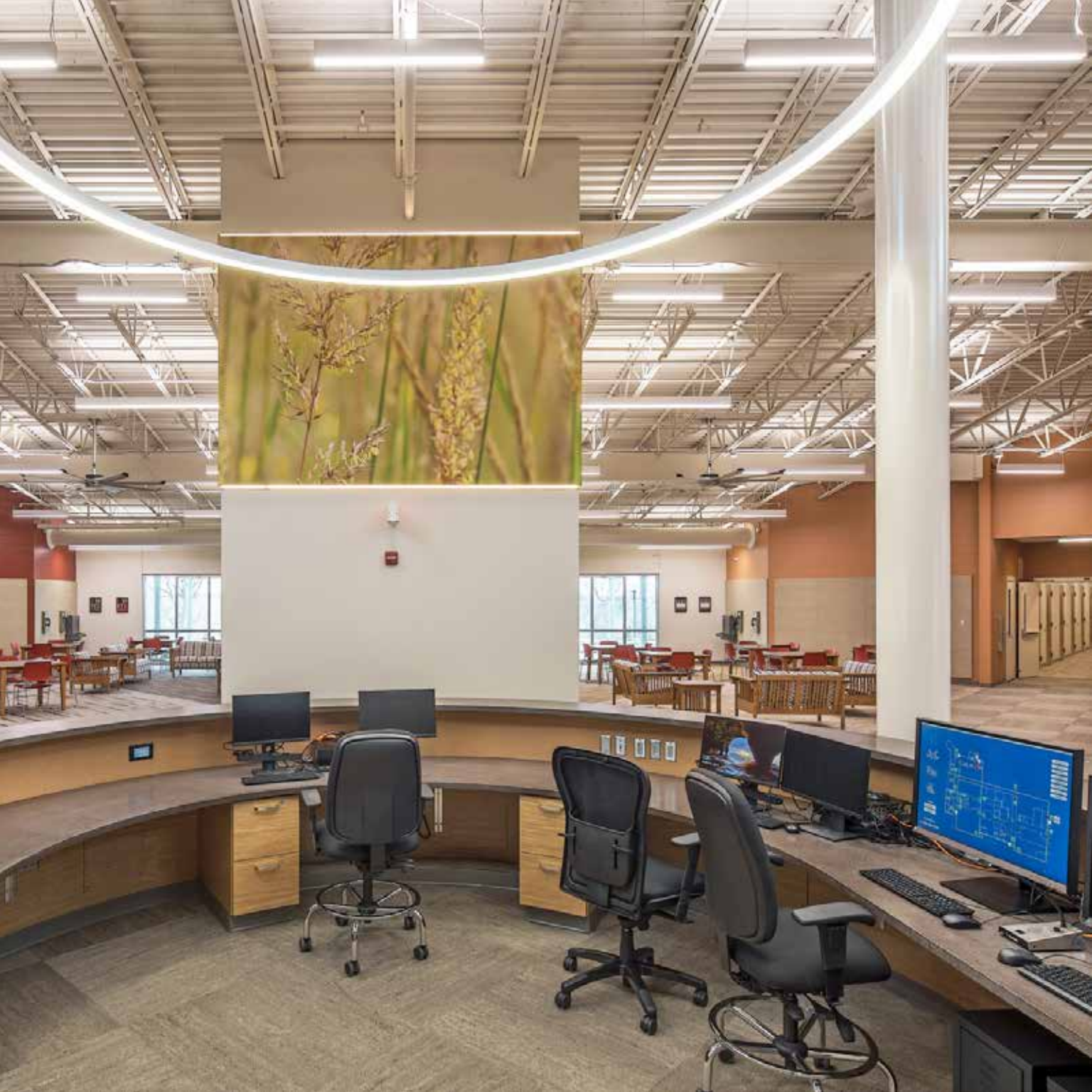
Nebraska Community Corrections Center - Lincoln

LINCOLN, NE
2019 • 57,000 SF • \$21M

Dewberry's justice team has a 12-year history of consistent work with the Nebraska Department of Correctional Services CND(S). This expansion of the Community Corrections Center – Lincoln, designed in conjunction with Carlson West Povondra Architects, includes a new 160- bed women's housing facility as well as a support building serving the women and the existing 400-bed men's facility. The 160-bed women's facility is organized around a single open two person staff station with sightlines down the four 40-bed wings (two person dry rooms) and open dayroom with four individual activity areas.

The residents are served by four office/therapy rooms; four multi-purpose (visiting, education, exercise) rooms; two laundry/toilet/shower/nourishment areas; and one resident processing and temporary holding area which are viewed by the staff station which also covers the reception desk. The support service building provides medical, kitchen, dining, commissary, maintenance, shop and warehouse functions for the 560-bed center, and is directly connected to the female facility providing medical, dining, maintenance commissary warehouse, laundry and trash removal services. The entry point provides a new separate entry for public and residents to the women's facility and service access to the support building and a fire loop to the existing service drive on the southeast.



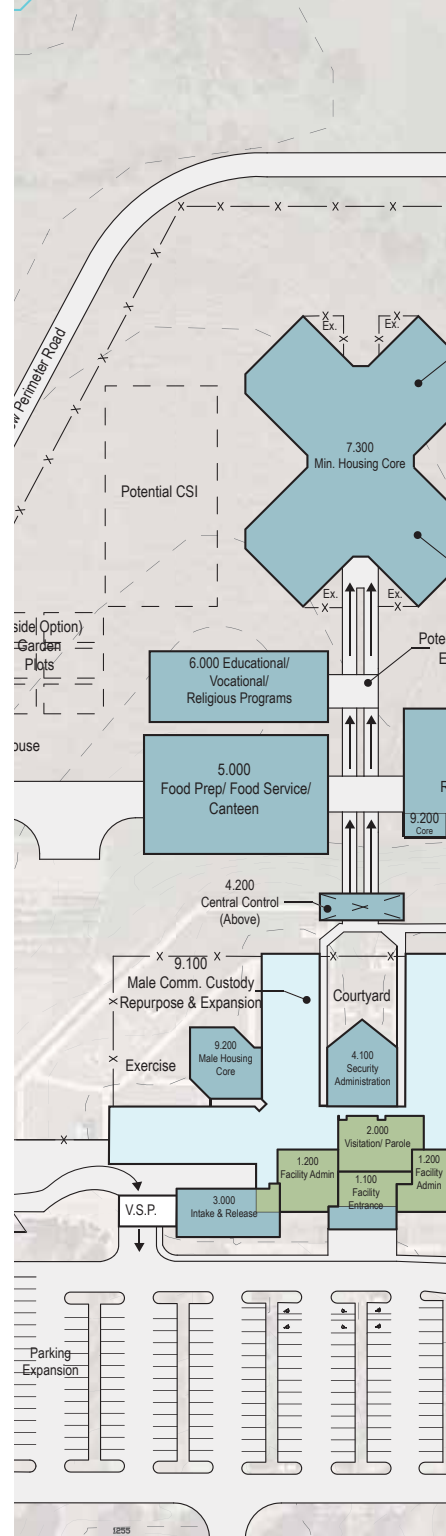


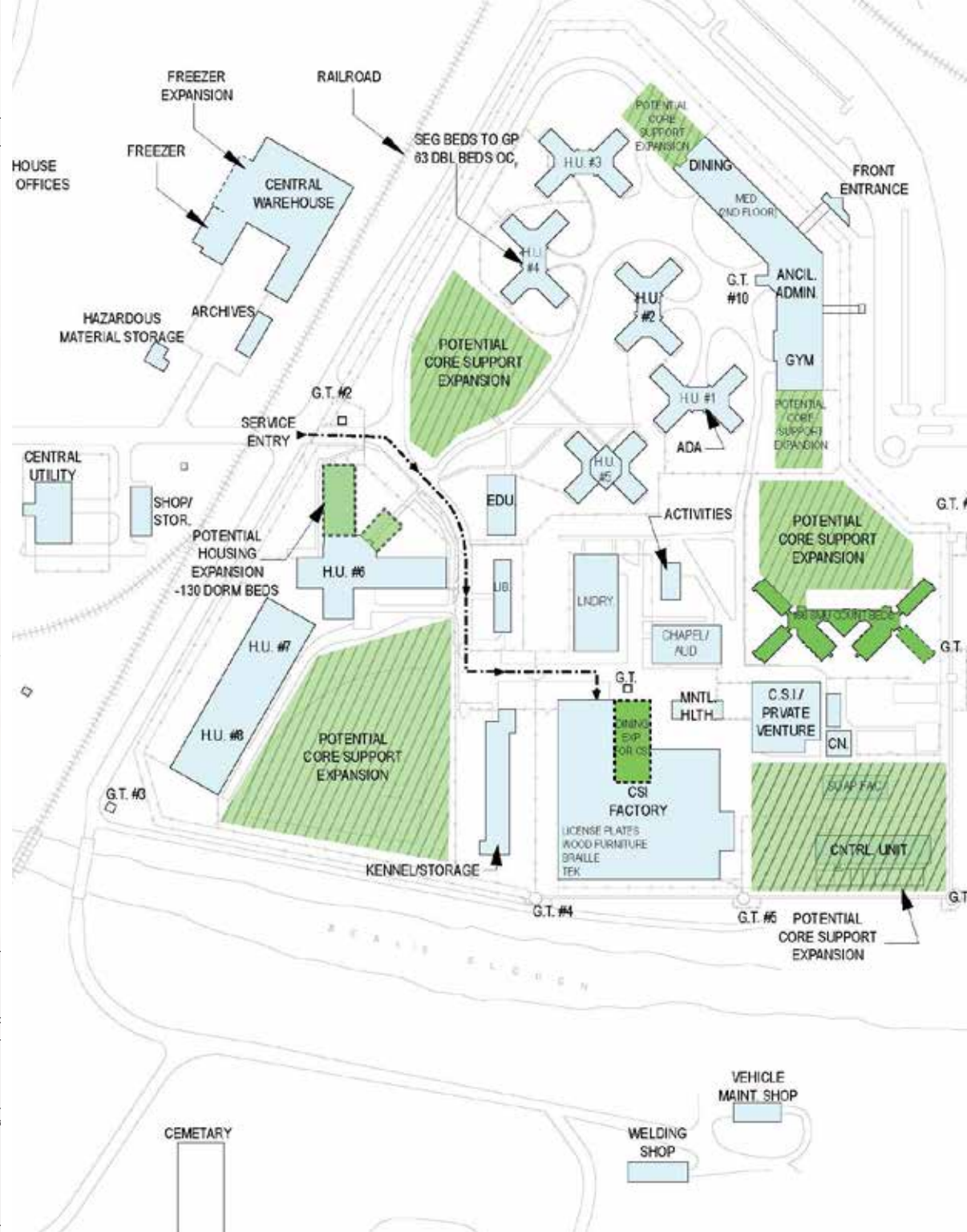
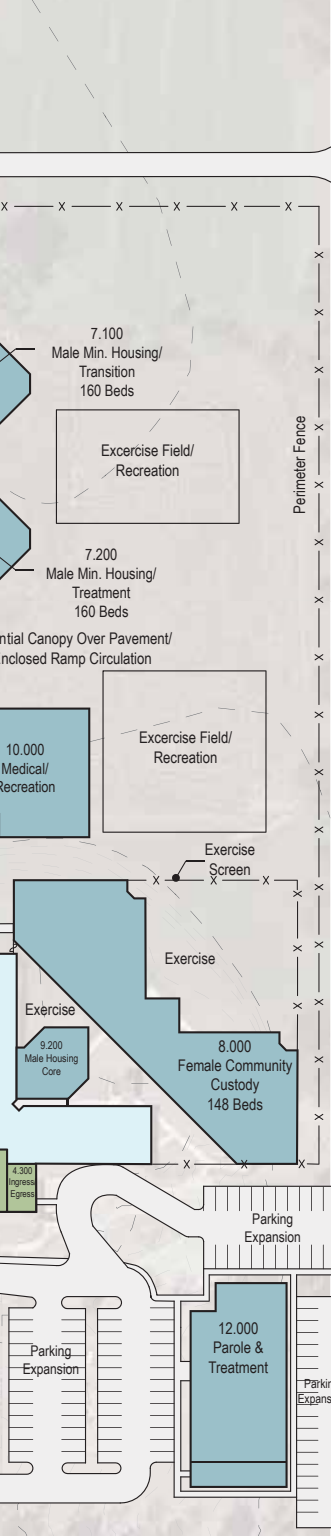
Nebraska Capital Facilities Master Plan

LINCOLN, NE
2015

Dewberry, in association with Carlson West Povondra Architects, provided the Nebraska Department of Correctional Services a comprehensive and updated strategic capital facilities plan to address a statewide shortage of inmate beds. The scope of the work included review and verification of population projections, an analysis of NDCS' existing physical plan to establish the best use for each facility, projections of bed space needs, operational and architectural programming for each custody level and facility type, and associated capital and operational cost projections.

The master plan provides a strategy for managing the current and anticipated growth of bed space needs through expanded uses of existing facilities as well as development of new bed spaces.





Naval Consolidated Brig - Chesapeake

CLEARWATER, FL

2014 • 210,000 SF • \$70M

Dewberry was contracted by Naval Facilities Engineering Command to develop design bridging documents for a new 400-bed facility on a 25-acre wooded site at the Naval Support Activity Norfolk – Northwest Annex. The five 80-bed housing modules are divided into two 40-bed units which share decentralized support functions.

The facility is organized with the housing modules on one side of a “green” activity courtyard used for active exercise (volleyball and basketball) and passive activities (walking, sitting, formal visiting). The other three sides of the courtyard reflect the programs, services and indoor recreation components of the facility (security command, intake, counseling, worship, visitation, dining, galley, laundry, warehouse, educational training, vocations and gym).

The main entrance for staff and public is through a two-level staff support/administration element and central lobby. The last two facility organizing elements are the service yard -- defined by the central plant, service dock, vocational elements, warehouse and vehicular sallyport -- and the large outdoor exercise yard, which is sized for a walking track, two softball fields, and a soccer/football field area. The facility was designed to meet LEED® Gold guidelines and is master planned for two additional housing units of 160 beds.

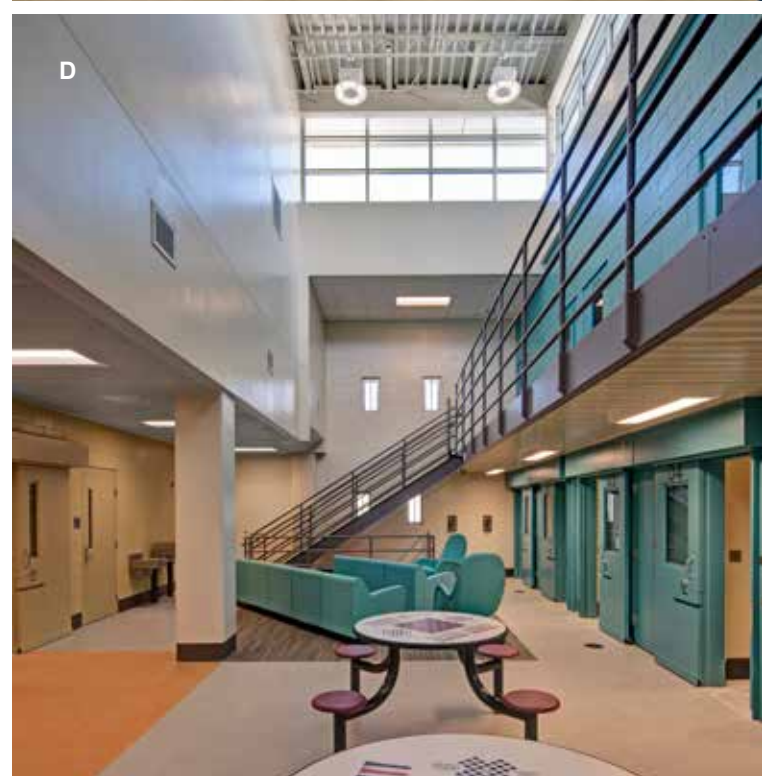
Because of our service to this client and dedication to detail, the Director of Navy Corrections, William Peck, presented awards to Dewberry and the NAVFAC Project Manager for design excellence of the functional concept and the RFP documents.

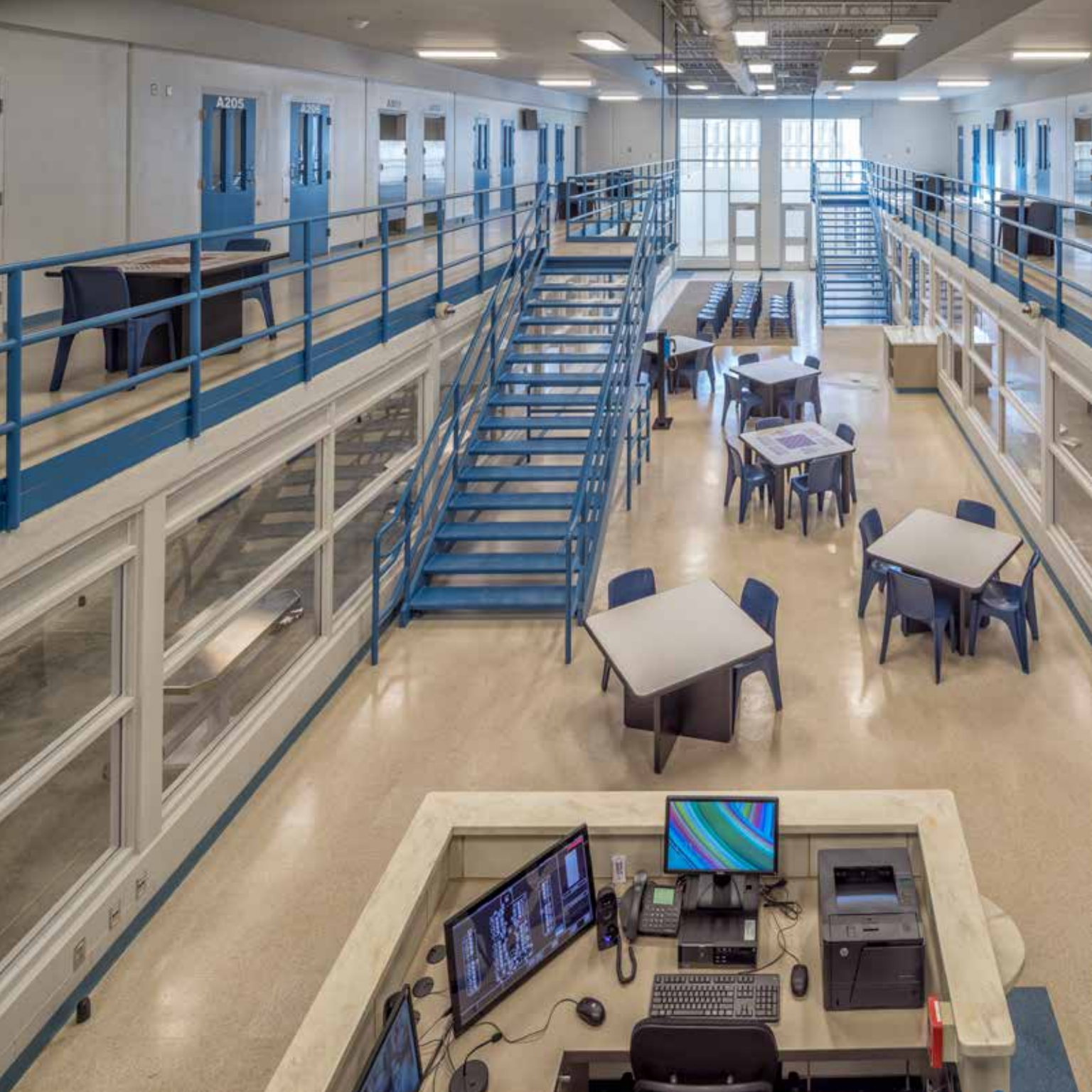




Additional Secure Housing Project List

- SCI Phoenix, New Correctional Facilities | Graterford, Pennsylvania — **A**
- Rappahannock Regional Jail Expansion & Renovation | Stafford, VA — **B**
- Lancaster County Adult Detention Center | Lincoln, Nebraska — **C**
- Baltimore Youth Detention Center | Baltimore, Maryland — **D**
- DeWitt Nelson Correctional Annex | Stockton, California
- Mule Creek Infill Complex | Lone, California
- Columbia County Detention Center | Lake City, Florida
- County of Riverside, East County Detention Center | Indio, California
- David L. Moss Jail and Mental Health Expansion | Tulsa, Oklahoma
- DeKalb County Jail Expansion | Sycamore, Illinois
- Sutter County Main Jail Expansion | Yuba City, California
- Correctional Substance Abuse Treatment Facility Study | State of Nebraska
- Milwaukee County Secure Residential Care Centers for Children and Youth | Milwaukee, Wisconsin
- Otero County Adult Detention Center Master Plan | Albuquerque, New Mexico
- Pinellas County Jail Master Planning Study and Design Criteria Documents | Clearwater, Florida
- Baltimore Women's Detention Center | Baltimore, Maryland
- Logan County Jail Study | Lincoln, Illinois
- Stanislaus County Jail and Intake Center | Modesto, California
- Northern California Women's Facility Retrofit for Re-Entry | Stockton, California
- Stateville Reception and Classification Center | Crest Hill, Illinois
- X-House Unit at the Stateville Correctional Center | Joliet, Illinois
- Oklahoma Forensic Center | Vinita, Oklahoma
- Treatment and Detention Facility Prototype, Illinois Department of Human Services | Joliet, Illinois
- New Castle Correctional Center Special Needs Facility | New Castle, Indiana
- Miami Correctional Facility | Peru, Indiana
- State of Michigan Center for Forensic Psychiatry | Ypsilanti, Michigan
- Core Annex Building Facility Program | Baltimore, Maryland
- Statewide Correctional Facilities Master Plan | Baltimore, Maryland
- Medium/Maximum-Security Unit | Jessup, Maryland
- Eastern Correctional Center | Princess Anne, Maryland
- Wilkes County Justice Center | Wilkesboro, North Carolina
- Buchanan County Jail | Independence, Iowa
- Jefferson County Law Enforcement Center | Jefferson City, Tennessee
- Dearborn County Justice/Public Safety Building | Lawrenceburg, Indiana
- Hennepin County Public Safety Facility | Minneapolis, Minnesota
- Garland County Jail Security & Detention Consulting | Hot Springs, Arkansas







SECURITY & TECHNOLOGY

Security/Technology

We have credentialed professionals serving internal and external architectural clients and end users across the United States. Our portfolio includes completed projects in public safety, secure housing, courts, and other government clients. We offer comprehensive technology design services for all low-voltage disciplines including security electronics, detention, telecommunications, and audio visual systems. Our group of experts provide services in all phases of design from feasibility studies and preliminary design to complete construction documents. We also offer construction administration and system commissioning services to manage our designs all the way through implementation.



TELECOMMUNICATIONS APPLICATIONS

- Category 6 cabling
- Wireless network
- Fiber optic network
- Local exchange carrier coordination
- Customer owned outside cable plant
- MATV/CATV distribution
- Distributed antenna systems

AUDIO/VISUAL APPLICATIONS

- Interactive presentation systems
- Voice lift/sound reinforcement
- Paging systems
- Video conferencing
- Video arraignment
- Intercom/page/clock
- Conference rooms
- Training rooms
- Briefing rooms
- Computer labs
- Gymnasiums
- Auditoriums
- Classrooms
- Courtrooms
- Jury assemblies
- Recreation spaces
- Command centers
- 911 and EOC spaces

SECURITY AND DETENTION APPLICATIONS

- Touch screen graphical user interface systems
- Programmable logic controllers
- Graphic control panels and industrial controllers
- IP and analog based video surveillance systems
- Digital and network based video recording systems
- RF and infrared personal duress systems
- Analog and IP based intercom/paging systems
- Analog and IP based video visitation systems
- Analog and IP based interview recording systems
- Proximity-/Biometric-based access control systems
- Non-lethal electric fence systems
- Microwave and shaker based perimeter
- Intrusion detection systems
- Detention furniture and furnishings
- Detention hardware
- Security/crash-rated fencing and gates
- Gate automation
- Crash barriers
- Building monitoring
- Emergency call pedestals

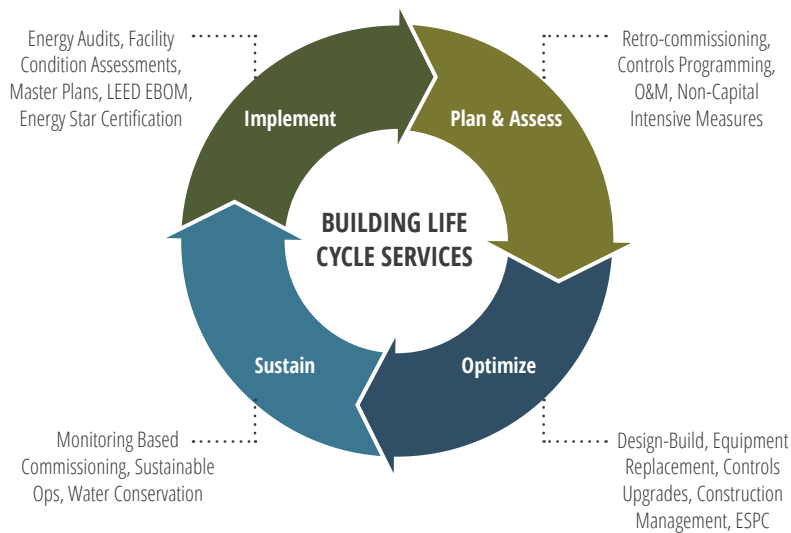




SUSTAINABILITY

Life Cycle Analysis

Our energy solutions group delivers a full range of professional energy consulting services. We approach each project with an emphasis on the life cycle performance of a building and can deliver the full spectrum of planning, repairing, renewing, and sustaining new and existing systems. In addition to designing, installing, and commissioning new buildings, we investigate, analyze, trouble-shoot, and commission existing facilities to create comfortable and more energy efficient buildings. These capabilities enable us to evaluate, guide, and direct our clients' decision-making process to deliver optimal solutions.



OPTIMIZE:

Facility optimization to verify a high-level of performance

IMPLEMENT:

Design-build project implementation customized to building size and requirements

SUSTAIN:

Real-world sustainable solutions yielding smaller energy footprints

BUILDING LIFE CYCLE SERVICES

- Energy engineering
- Turnkey design-build services
- Monitoring based commissioning
- Commissioning
- Retro-commissioning
- Project and construction management
- Design-Build energy efficient building upgrades
- Automated controls, smart building technology, and system integration
- Establish funding (+ utility rebate)
- High-performance system design
- Infrastructure master planning
- HVAC upgrades including air handlers, VAV, chillers and boilers
- Renewable/alternative systems, including solar photovoltaics
- Co-generation
- GeoExchange

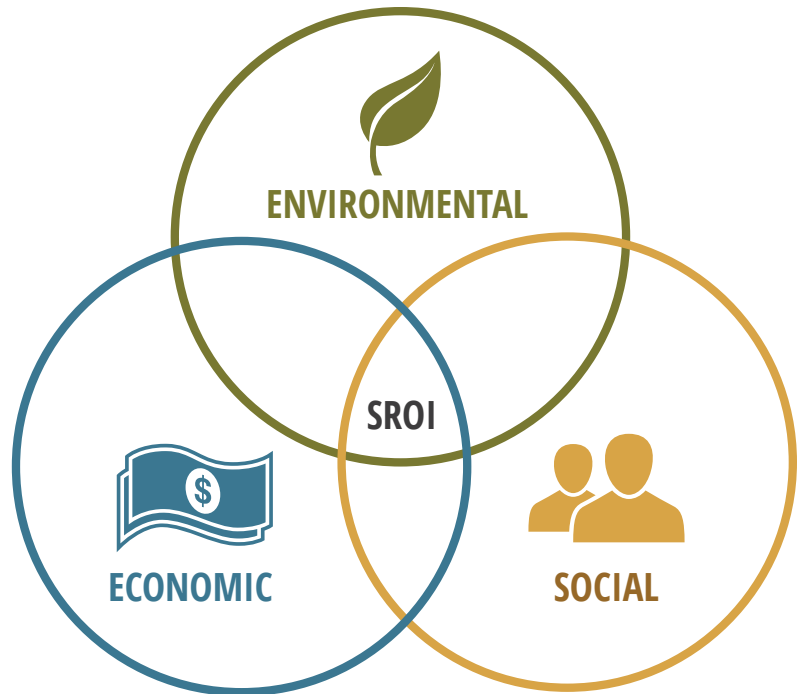
Sustainable Return on Investment (SROI)

Our sustainable vision is based on a holistic and cohesive approach that crosses all disciplines and accounts for all stakeholders. We utilize an all-encompassing sustainable design process to guide the programmatic design while addressing energy efficiency measures and sustainable best-practice measures to meet or exceed LEED or other similar sustainable requirements.

We understand that moving from subjective discussion about green benefits to quantitative business cases that monetize social and environmental impacts offers a new way of thinking about decision-making process. This is why we offer a state-of-the-art life cycle cost analysis approach based on the “triple bottom line” economic framework called sustainable return on investment (SROI).

The SROI methodology enhances our sustainable design approach by providing a quantitative business case for sustainable strategies and to evaluate a project’s life cycle cost analysis requirement. It provides a powerful basis for “designed-in” sustainability. It is also a means of determining justification for achieving a certain level of LEED certification or equivalent.

SROI’s comprehensive business case can also be used to set the scene for performance-measurement and accountability. The SROI approach quantifies costs, benefits, and returns on investment in relation to a baseline project approach and can be revised as the project progresses to reveal savings in capital and operating and maintenance costs, as well as benefits in each year associated with improved environmental benefits, or Greenhouse gas emission reduction.







Contact

JIM BEIGHT

Director of Justice Architecture

jbeight@dewberry.com

703.698.9052

